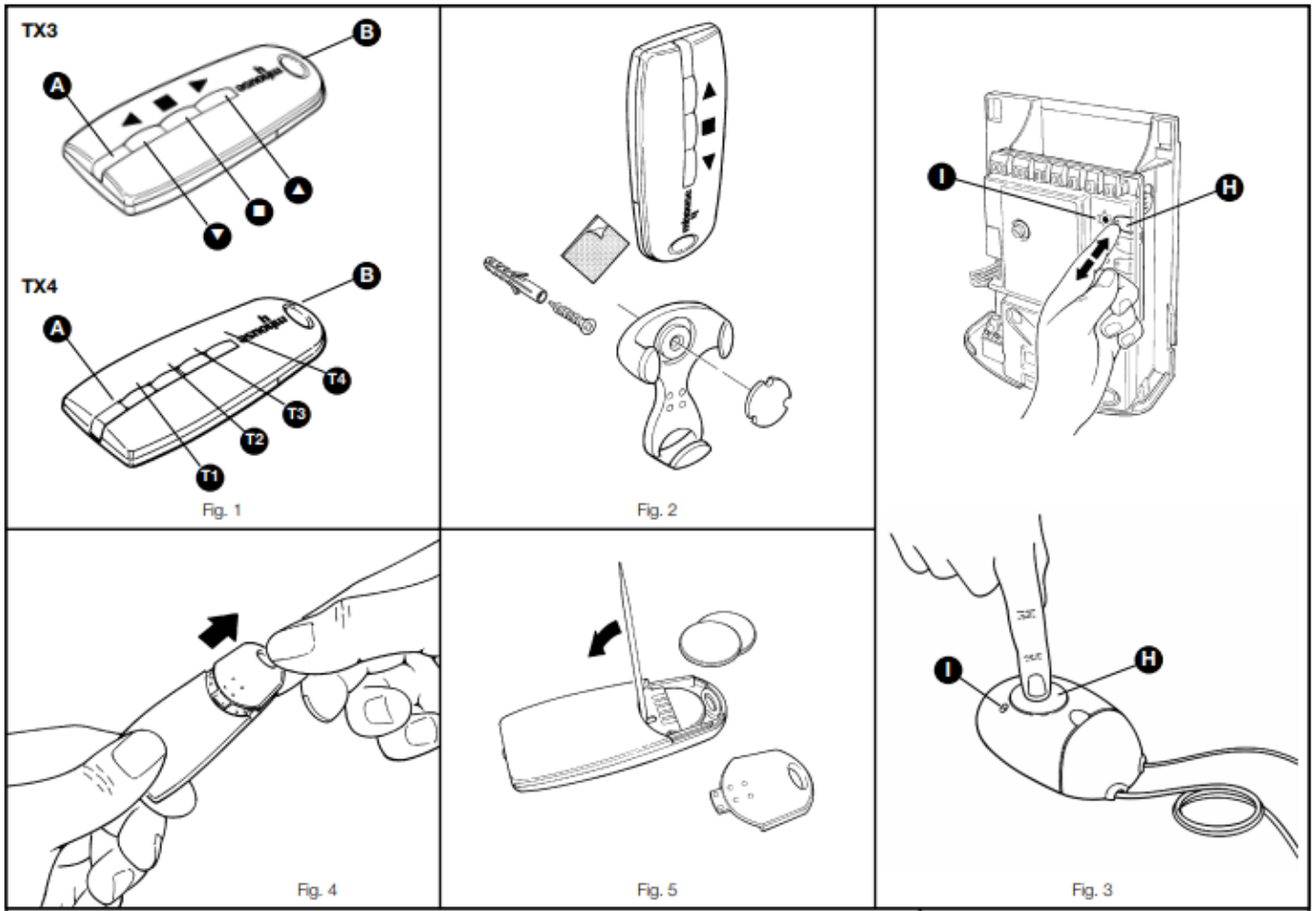




MHOUSE TX3



1. Press Button P1 [H] in Fig.3 for at least 3s; when the P1 LED [I] shown in Fig.3 goes off, release the button.
2. Within 10s, press any button on the radio transmitter to be memorized for at least 2s. If the memorization procedure is successful, the P1 LED will flash 3 times
3. If there are other remote controls to be memorized, repeat step 2 within the next 10s, otherwise the memorization stage will terminate automatically

Or:

4. Press button P1 as many times as the number corresponding to the desired command, according to the table 2 (e.g. 3 times for the "Open only" command)
5. Make sure that the P1 LED flashes as many times as the number corresponding to the selected command
6. Within 10, press any button on the radio transmitter to be memorized for at least 2s. If the memorization procedure is successful, the P1 LED will flash 3 times
7. If there are other remote controls to be memorized for the same type of command, repeat step 3 within the next 10, otherwise the memorization stage will terminate automatically.

Memorisation from an already programmed remote control:

Holding the two transmitters, position yourself near the control unit or receiver and perform the following operations:

1. Press the button on the NEW transmitter and hold it down for at least 5s, then release it.
2. Press the button on the OLD transmitter 3 times slowly.
3. Press the button on the NEW transmitter once slowly.

At this point the NEW transmitter will be recognized by the control unit or receiver and will assume the characteristics of the OLD one. If there are other transmitters to be memorized, repeat all the steps above for each new transmitter.