



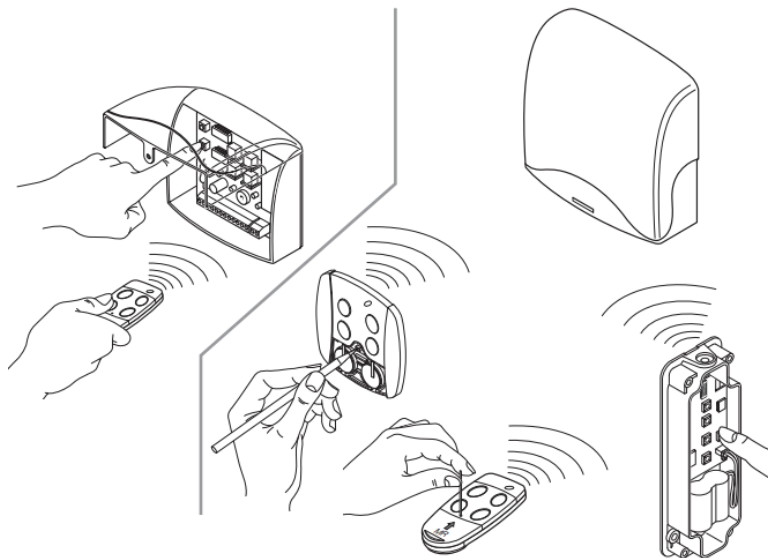
### CARDIN R S449 DISPLAY

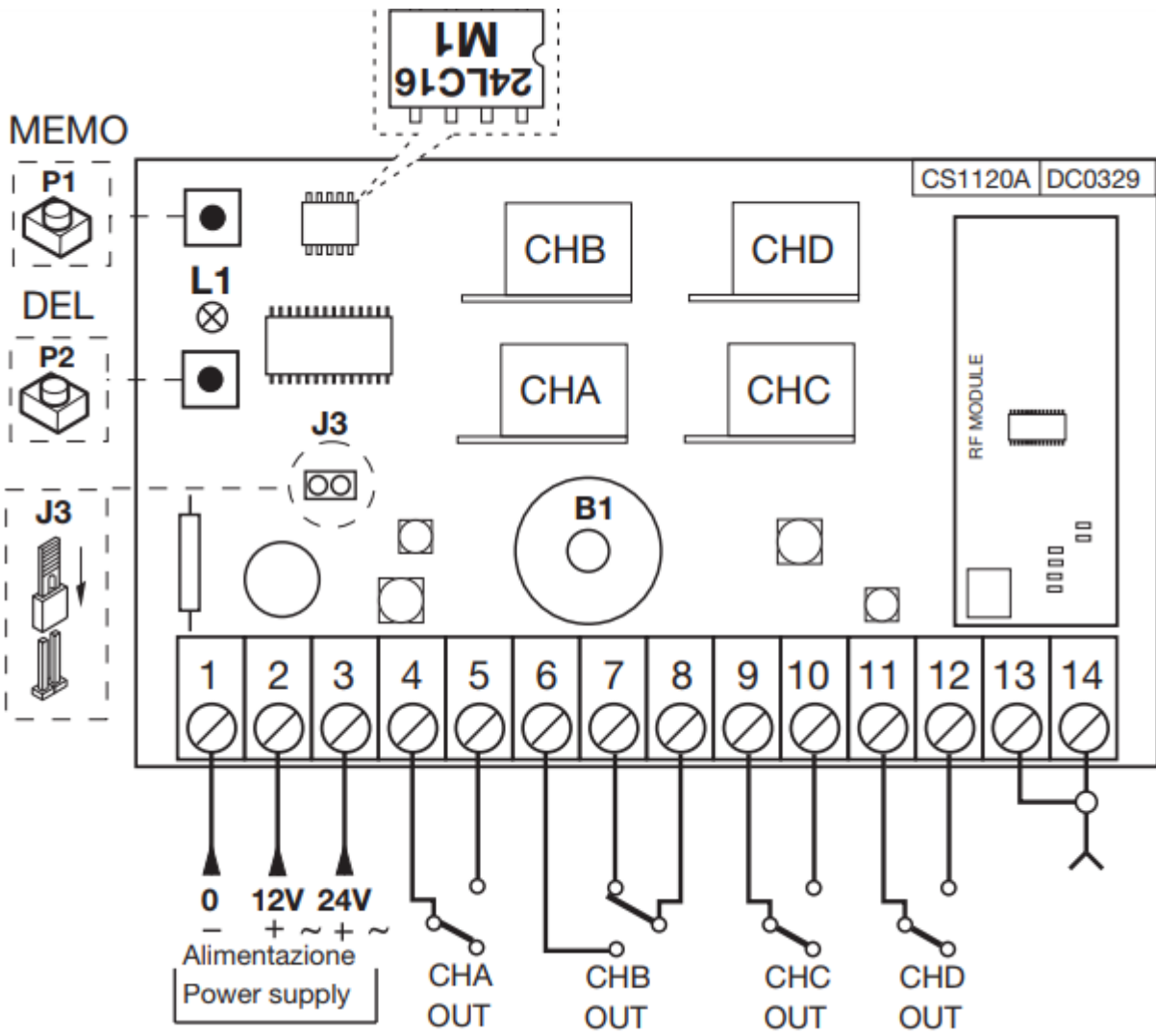
1. Keep button "P1" MEMO pressed down and the led "L1" will start to flash slowly
2. Press the channel on the transmitter which is to be memorised.
3. Keep button "P1" pressed down and wait until LED "L1" starts to flash again.
4. Press the channel on the transmitter which is to be memorised again (same transmitter, same channel).

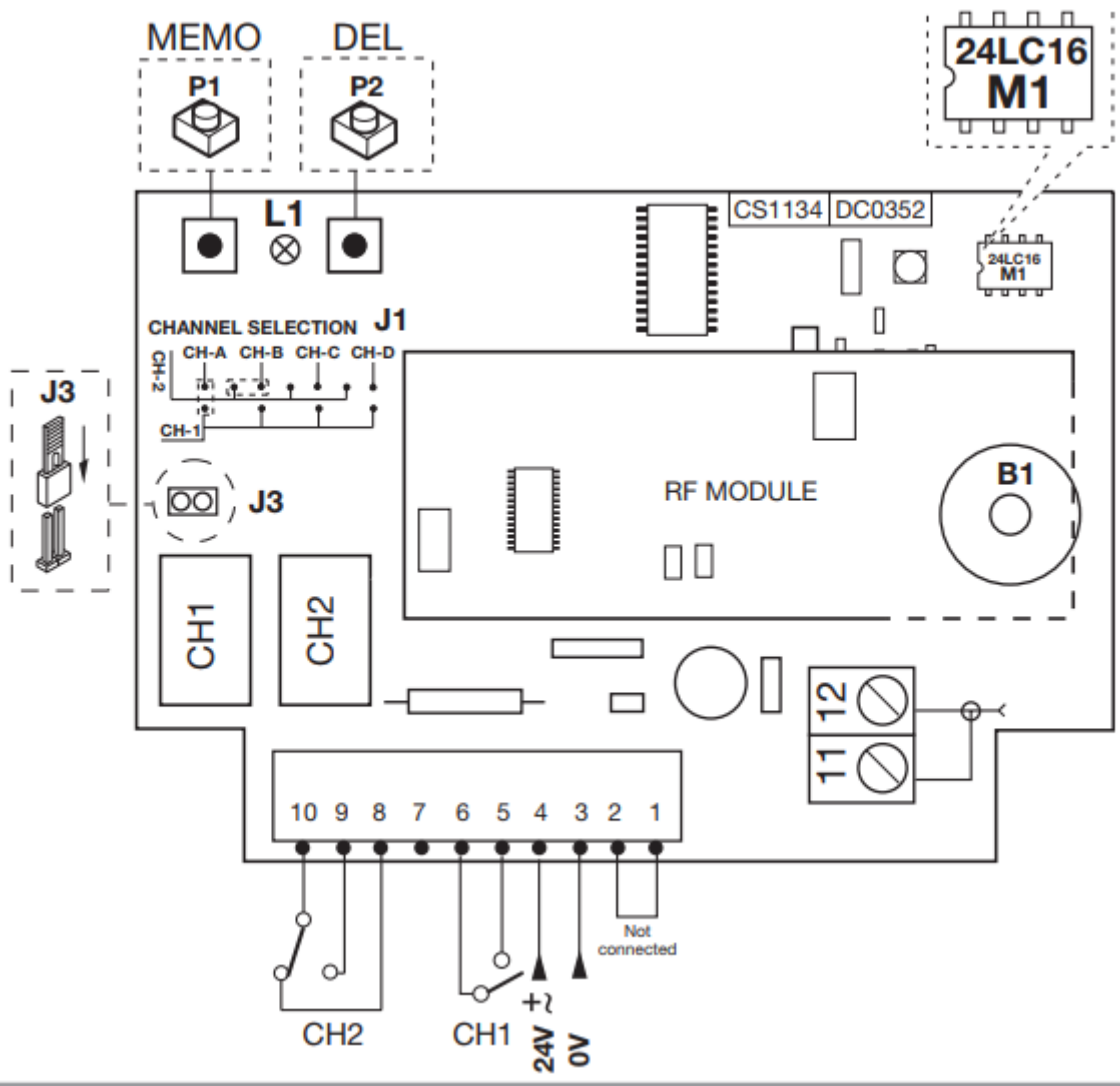
If the channel or the transmitter is different you will not be able to memorise the channel.

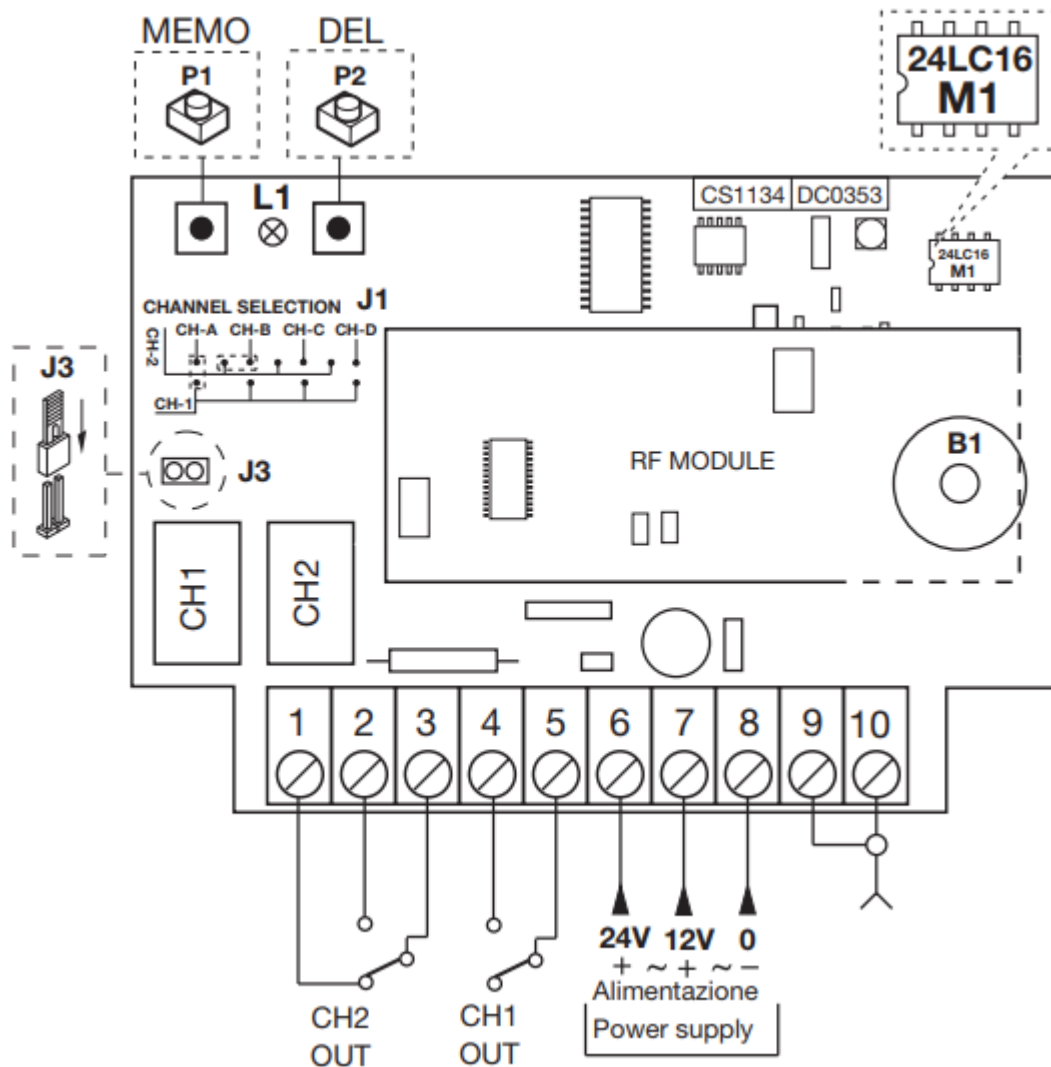
5. End of the memory procedure. LED "L1" will remain lit for 2 seconds meaning that the channel has been correctly memorised. Release button "P1"

- It is not possible to memorise a user code that is already in memory: In this case when the transmitter is activated (point 2) the led will stop flashing. The program will only work again when button "P1" MEMO has been released.
- If the transmitter is not activated a second time within fifteen seconds the program will automatically leave the memory mode without memorising a new user code.
- If a new user code is activated the first time and a different channel (with an already memorised user code) is activated the second time, the program will automatically leave the memory mode (because the two codes do not correspond) and the channel present in the second transmission will be activated. When the receiver's memory is almost full the user search function can take up to 1 second to complete.









## Memorising a channel:

Memorisation can be activated by radio (without opening the receiver container) if jumper "J3" has 16 been inserted.

1. Make sure that the jumper "J3" has been inserted in receiver.
  2. Using a transmitter, in which at least one channel button "A,B,C or D" has already been memorised in the receiver, press the button "MR" . Note: all the receivers within range when the channel button is pressed (and which have at least one of the transmitter channel buttons memorised) will activate their signal buzzer "B1"
  3. Press one of the channel buttons on the transmitter. The receivers which do not contain that channel code will sound a five-second long "beep" and will then deactivate. The receivers which contain the channel code will sound a one-second long "beep" and will enter the programming mode.
  4. Press one of the channel buttons on the transmitter which you wish to memorise; the receiver will sound 2 "beeps" of half a second each after which the receiver will be ready to receive another code.
  5. To leave the programming mode wait for 5 seconds without pressing any buttons. The receiver will sound a five-second long "beep" and will then exit the programming mode. •
- When the memory is entirely occupied the buzzer will sound 10 rapid "beeps" and will automatically leave the "programming via radio" mode. Led "L1" will remain lit on the receiver. The same signal is given each time you try to enter "programming via radio" when the memory is full