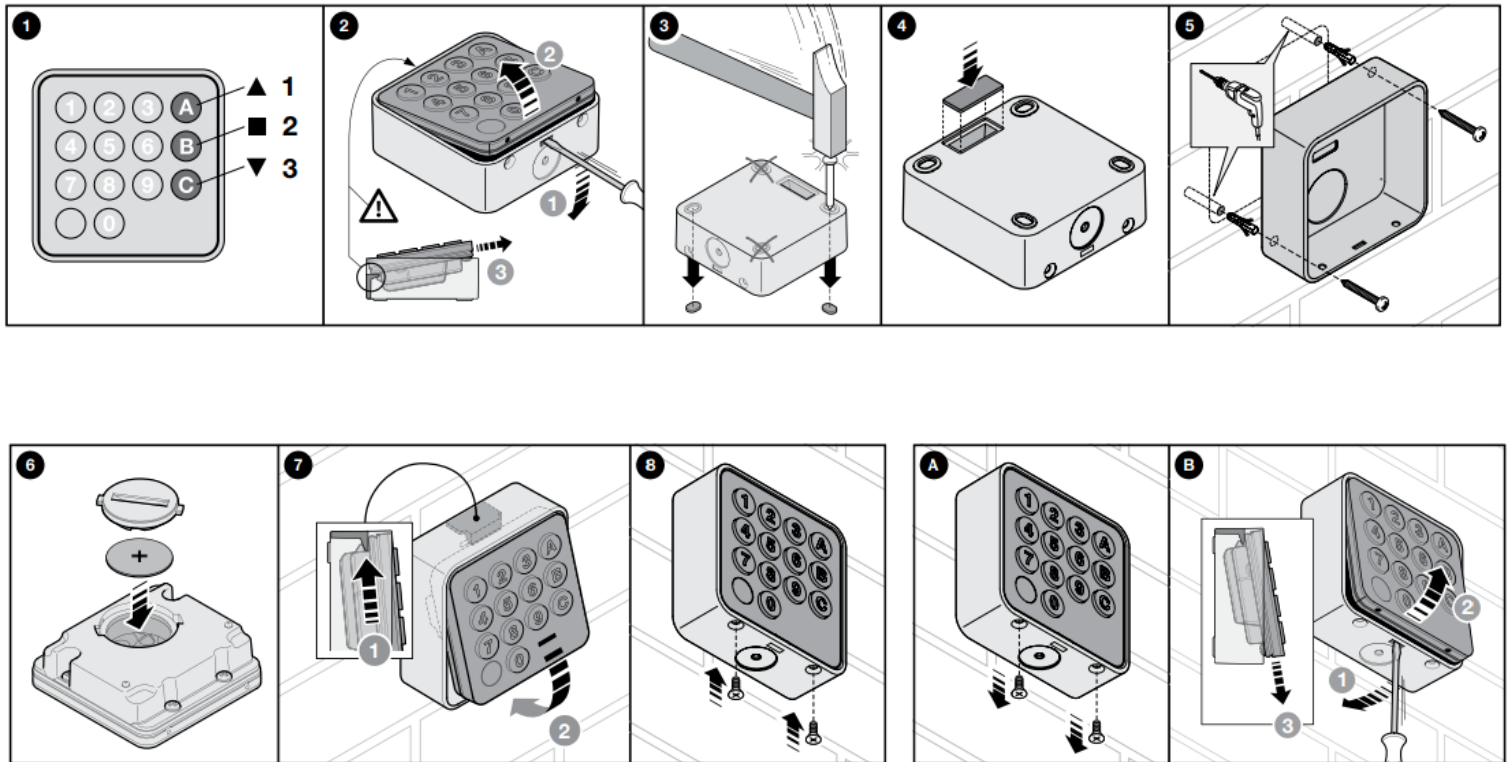




NICE EDSWG KEYPAD



Placing the transmitter in the mounting points and testing the radio range

Choose where you want the transmitter to be mounted

WARNINGS • The transmitter can be installed externally or internally; • it must be installed on a vertical wall, consisting of solid material providing stable anchorage; • it must be positioned at a height of 1.5 m from the ground, to facilitate entering passwords and commands.

• The transmitter range and the receiver reception capacity can be disturbed by various factors:

- the devices are too far apart (see limits in Chapter 7);
- the presence of other devices operating on the same frequency (for example: alarms, earphones, etc.) in the immediate vicinity;
- metal surfaces on which the transmitter is placed (they can shield transmission);
- flat battery (which can reduce the radio range by 20-30%).

In all such cases, the manufacturer cannot provide any guarantee regarding the actual range of its devices.

Place the transmitter provisionally in its desired location for installation, but do not fix it permanently.

Perform commands on all the automations concerned, checking to see that they receive the commands. If the reception is poor, read the warnings in step 1. Try to move the transmitter to a more favourable position and repeat the tests for sending commands to the automations

Installing the transmitter in the intended position:

After you have checked the operation of the transmitter, install it definitively as shown in fig. 2, 3, 4, 5, 6, 7 and 8

USING THE TRANSMITTER:

To command an automation (or a group of automations) you must first enter the security password and, immediately after, the command key (A, B or C) paired with the password you have just entered.

Note – As you enter the password and the command, after pressing one key you have 6 seconds to press any other key. If this time elapses, the password must be entered again, starting from the beginning.

The product leaves the factory with three preset security passwords, each paired with a command key (A, B, C). The passwords are:

- password 1 - 1 (paired with key "A");
- password 2 - 2 (paired with key "B");
- password 3 - 3 (paired with key "C").

CAUTION! – Since all EDSWG - EDSWG/A transmitters have the same default passwords, we recommend that you replace the factory preset security passwords with personal and confidential ones, in order to exploit the confidentiality potential of the product.

Security passwords can also be disabled or re-enabled

The password must be entered correctly in order to be able to send commands. If you make a mistake while entering the password, you should immediately press the command key (A, B or C) paired with the password and wait for the error signal (5 beeps!).

When it stops, enter the password again