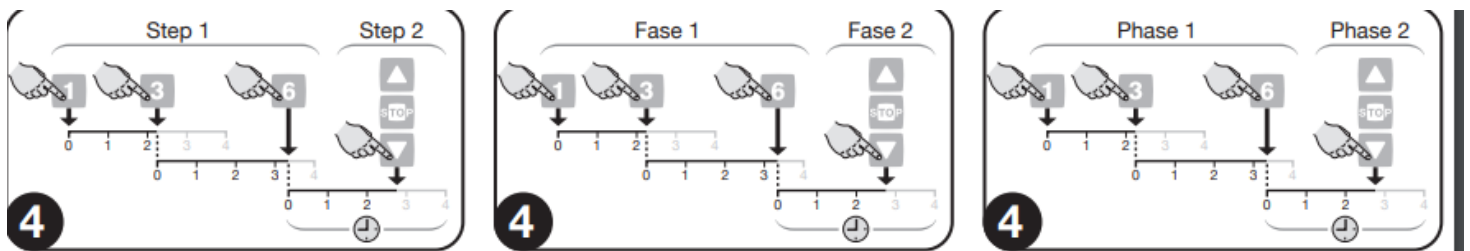


NICE WM001C, WM003C, WM009C, WM001G, WM002G, WM003G, WM003C1G, WM006G, WM004G

STEP 1 - SELECT THE AUTOMATION SYSTEMS:

Select the identification number on the remote control (buttons 1, 2, 3, 4, 5, 6) of the automation to be controlled and, in the event of several automation systems, select the respective numbers one after the other, as in the following figure:



STEP 2 - SEND THE COMMANDS:

Once the automation systems have been selected and before the led goes off, the commands must be sent to them by pushing one of the following buttons:

▲ (Open); ■ (Stop); ▼ (Close).

WARNING: Steps 1 and 2 must be performed while the LED is on, each time the button is pushed prolongs the time the led remains on (if already on) for a further 4 seconds

The commands sent with buttons ▲, ■, ▼ also memorise the automation systems selected in step 1 which replaces the previous memorisation

These memorised automation systems can be subsequently commanded by pushing the ▲, ■, ▼ buttons. Whereas, if the led goes off before the command is sent with the ▲, ■, ▼ buttons, memorisation does not take place and the ▲, ■, ▼ buttons will only command the previously memorised automation systems.