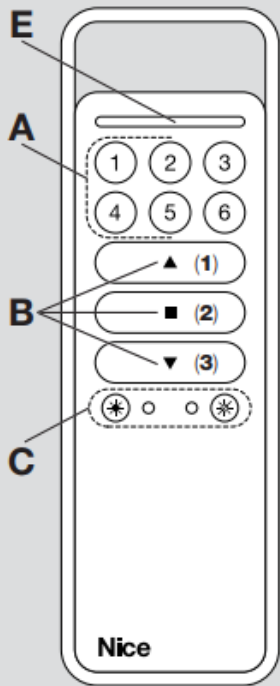
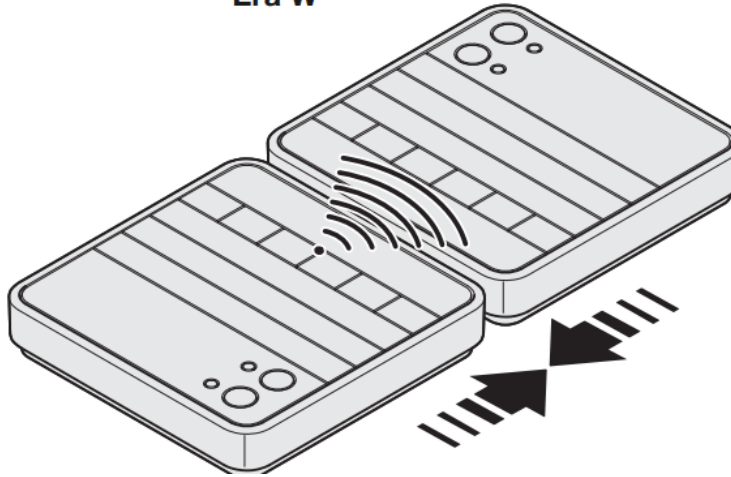


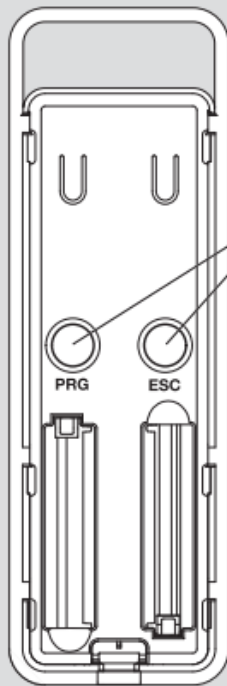


NICE P1, P1S, P6, P6S, W1, W1S, W6, W6S

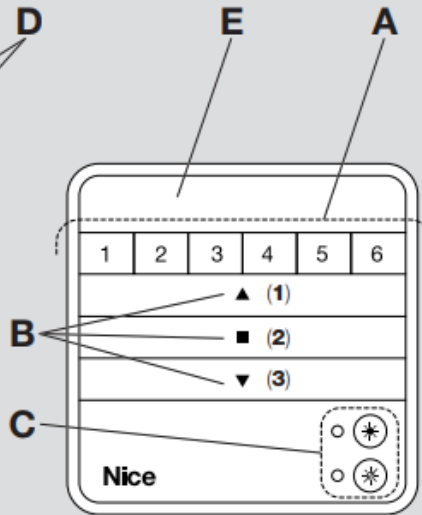
Era W



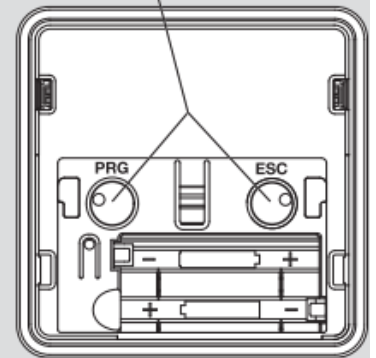
Era P

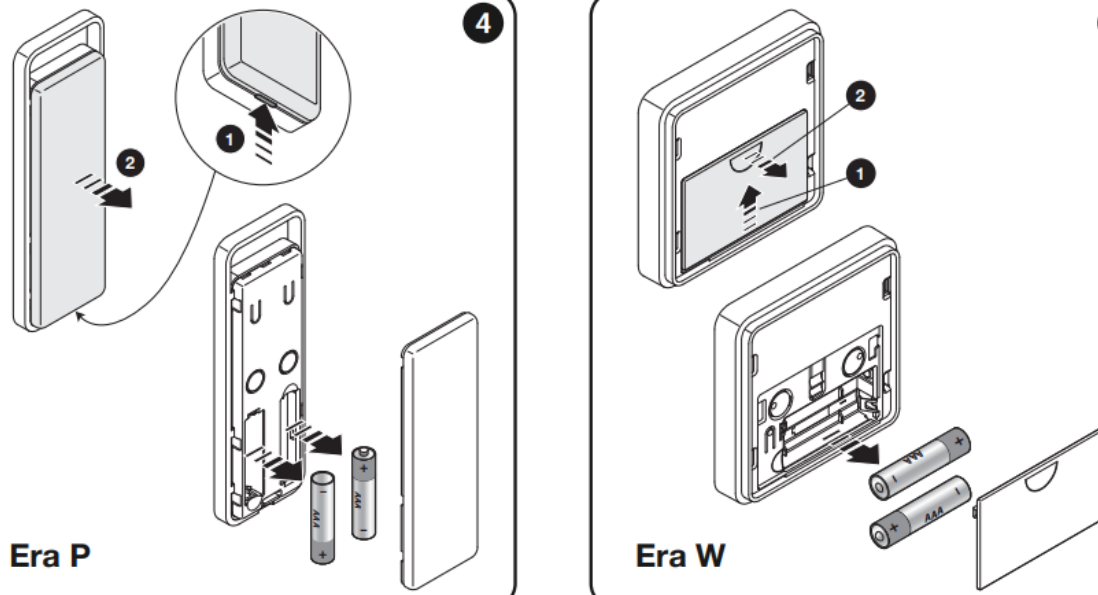


D



Era W





Memorisation through the "Enable Code"

Important – This procedure is specific for the motors and the control units which are part of the Era Nice line.

The transmitters of the **Era-P** and **Era-W** ranges have an "enable code". The transfer of this code from an already memorised transmitter (old) to a transmitter to be memorised (new) allows the latter to be recognised by the motor and, therefore, be automatically memorised by this during the sending of the first commands. Attention! – the transfer may take place only between transmitters belonging to the Era-P and Era-W ranges. The procedure is as follows:

Put the two transmitters close together (for Era P), (for Era W), and keep the two attached together until the end of the procedure.

On the "new" transmitter: keep ▲ pressed (in the P6, P6S, W6, W6S models, briefly press first the "unit" in which you want to memorise the enable code) and then release the key after the LED (with light steady) turns on on the "old" transmitter.

Release the key and the LED starts flashing.

On the "old" transmitter:

- in the P1, P1S, W1, W1S models: press and release ▼. When the key is released the LEDs of the two transmitters flash for some time (= enable code transferred).
- in the P6, P6S, W6, W6S models: press and release the unit key which contains the enable code to be transferred. When the key is released the LEDs of the two transmitters flash for some time (= enable code transferred).

During the procedure, any error is signalled by the LED with the following fast flashes:

- 10 flashes = communication error between the devices.
- 15 flashes = memorisation failed due to time limit exceeded