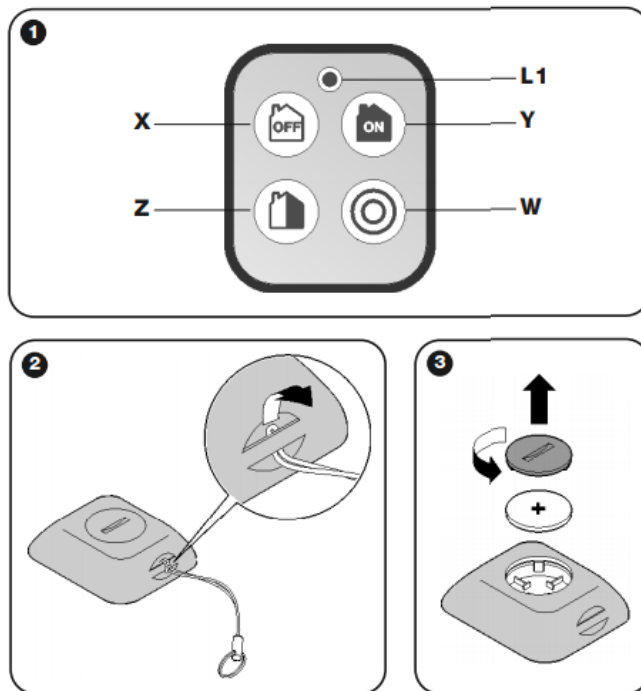




### NICE HSTX4



**X** =  (OFF) Key: TOTAL DEACTIVATION

**Y** =  (ON) Key: TOTAL ACTIVATION

**Z** =  Key : PARTIAL ACTIVATION OF ZONES A + B

**W** =  Key: ALARM (panic, illness or burglary)

## **PROGRAMMING:**

Before memorising HSTX4 on the control unit, ensure correct operation by pressing any key and checking that led L1 illuminates at the same time (fig. 1).

- Activation - Deactivation - Partial activation of the control unit for zones A + B: set the control unit to perform the procedure for learning HSTX4 (see control unit instruction manual) and press the keys ON and OFF at the same time: 1 beep on the control unit confirms successful programming.

- Activation of alarm "panic/illness/burglary"

- Activation of receiver: set the control unit/receiver to perform the procedure for learning HSTX4 and press the key for 10 seconds: 1 beep on the control unit confirms successful programming