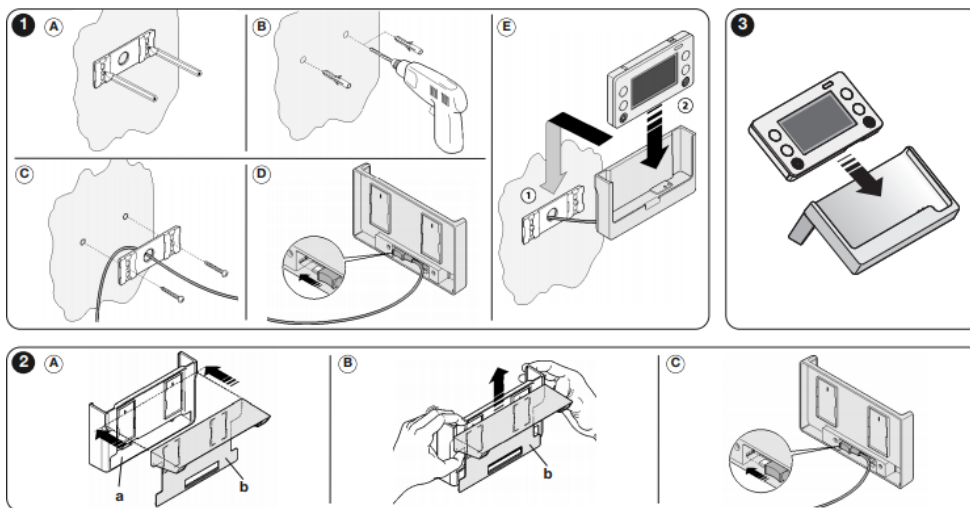


## Nice HSTSA1

### Wall mounting:

- Check that the surface on which the product is to be mounted is sufficiently robust.
  - Check that the power supply cable can pass through the opening in the centre of the support fig. 1.
  - Do not install the support close to a heat source.
01. Mark the anchorage points on the wall, drill holes, insert the screw anchors provided and pass the power cable through the opening in the centre of the support (fig. 1/A-B-C);
  02. Fasten the support in place with the screws supplied (fig. 1/C);
  03. Connect up the micro USB connector of the power supply unit provided (fig. 1/D);
  04. Hook the support onto the wall and insert the touchscreen keypad (fig. 1/E)



### 2.2 - Mounting on tabletop support

Warnings – Place the support on a flat surface where it will be protected against accidental falls. Assemble the tabletop support:

01. Insert part (b) into support (a) as shown in fig. 2/A;
02. Slide bracket (b) upwards as shown in fig. 2/B;
03. Connect up the micro USB connector of the power supply unit provided (fig. 2/C);

### 2.3 - Power supply

01. Replace the original (non-rechargeable) batteries in the touchscreen keypad with the rechargeable batteries supplied with the HSTSA1.
  02. Enable the “recharging” function in the “settings” menu of the touchscreen (refer to the HSTS2’s instruction manual).
  03. Insert the touchscreen keypad in its support (fig. 3) and check that the orange led comes on on the touchscreen, indicating that recharging is underway. The led will turn green when the batteries are completely recharged.
- You may now leave the touchscreen keypad in its support or take it somewhere else.  
To prolong battery life, do not recharge the batteries until they are depleted ( ) and always recharge them completely (until the led turns green).