

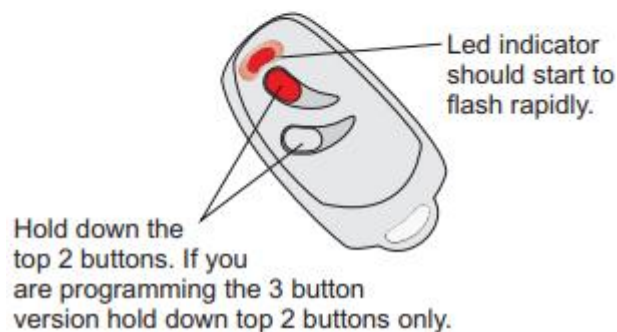


### SEA SMART DUAL ECOPY 433 TX3

Existing transmitter



Smart Dual Copy



#### **Programming from your existing remote control (It must be in good working order to make the copy)**

1. Push the two grey and red buttons down on your new remote control and hold (If there are three buttons, push the one that is near the red button) When the LED light starts to blink release the two buttons.
2. Press and release the button you would like to program, the red LED goes on flashing.
3. Press and hold down the button that you would like to program on your new remote control
4. Now that the LED is flashing, place the two remotes close to each other
5. The LED light on your new ECOPY will flash twice which means the programming has been successfully carried out