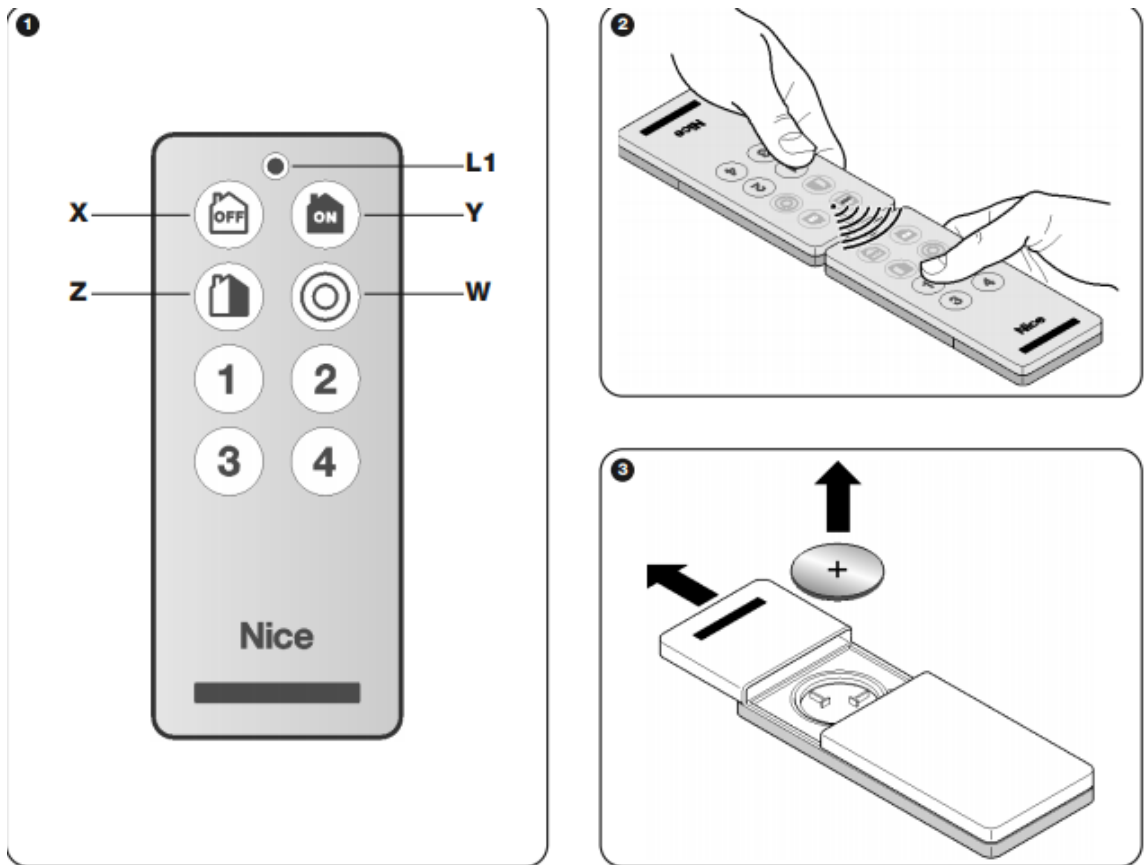





### NICE HSTX8




The coding system of the keys X, Y, Z, W (fig. 1) is compatible with the "Nice Home Security" systems and each key is factory set with a precise function.

Some keys may be programmed differently as required.

The transmitter is bidirectional; after sending the commands "ON", "Off" and "Partial ON" (orange led lit) it remains on standby for a response (orange led flashing) and displays the result (green = OFF; red = ON or Partial ON). If the led turns off after waiting for a response, this means that the response has not been received.

**X** = Key  : TOTAL DEACTIVATION


---

**Y** = Key  : TOTAL ACTIVATION

---

**Z** = Key  : PARTIAL ACTIVATION OF ZONES A + B

---

**W** = Key  : ALARM (panic, illness or burglary)

---

- The coding system used on the other keys 1, 2, 3, 4 (fig. 1) is "O-Code", compatible with the "NiceOpera" and "FloR" systems, for the control of automations on doors, gates and similar products.
- Programming HSTX8 on alarm control units (keys X, Y, Z, W - fig. 1)  
Before memorising HSTX8 on the control unit, check correct operation by pressing any one of the keys X, Y, Z, W (fig. 1) and ensure that led L1 illuminates (fig. 1); if this does not occur, see chapter 3 - Battery replacement. – Activation - Deactivation - Partial activation of the control unit for zones A + B: set the control unit to perform the procedure for learning HSTX8 (see control unit instruction manual) and press the keys OFF and ON (X e Y - fig. 1) at the same time : 1 beep on the control unit confirms successful programming. – Activation of alarm "panic/illness/theft" - Activation of receiver: set the control unit/receiver to perform the procedure for learning HSTX8 (see relative control unit instruction manual) and press the key "Partial ON" (Z - fig. 1) for 10 seconds: 1 beep on the control unit confirms successful programming.
- Using HSTX8 on the "NiceOpera" system (keys 1, 2, 3, 4 - fig. 1) For keys 1, 2, 3, 4 (fig. 1) HSTX8 adopts a call transmission technology named "O-Code". The transmitter is equipped with a "Memory", a "Proximity Receiver" and an "Enable Code" which, together, enable operations and programming via radio of standard functions in the "NiceOpera" system. Before memorising the transmitter on the automation receiver, check correct operation by pressing any one of the keys 1, 2, 3, 4 (fig. 1) and ensure that led L1 illuminates (fig. 1); if this does not occur, see chapter 3 - Battery replacement.

### **Memorising the transmitter:**

To memorise the transmitter on a NiceOne receiver, select one of the following procedures: Memorisation in "Mode I" - Memorisation in "Mode II" - Memorisation in "Extended Mode II" - Memorisation via "Certificate Number" - Memorisation via "Enable Code" received from a previously memorised transmitter – Remote Memorisation . The operating procedures for these memorisation modes are provided in the instruction manual of the Receiver or Control Unit used to operate the transmitter. These manuals are also available on the web site: [www.niceforyou.com](http://www.niceforyou.com) This manual only contains the memorisation procedures that can be performed without intervention on the Receiver.

## **Memorisation via the "ENABLE code" [between two transmitters]**

This procedure is specific only to devices belonging to the NiceOpera system, with "O-Code" encoding. The HSTX8 transmitters have a secret code, named "ENABLE CODE". This "enable code", duly transferred from an old (previously memorised) transmitter to a new HSTX8 transmitter, enables recognition of the latter and thus automatic memorisation by a receiver.

The procedure to transfer the "enable code" from an OLD to a NEW transmitter can be performed from any location, normally and preferably far from the receiver:

01. Position two transmitters close together (i.e. in contact - fig. 2); one NEW version (to be memorised) and an OLD version (already memorised).
02. On the NEW transmitter, press and hold any key (1, 2, 3, 4 - fig. 1) until the Led on the OLD transmitter lights up. Then release the key (the Led of the OLD transmitter starts flashing).
03. On the OLD transmitter, press and hold any key (1, 2, 3, 4) until the Led on the NEW transmitter lights up. Then release the key (the Led turns off, indicating completion of the procedure and confirmed transfer of the "enable code" onto the NEW transmitter). For the first 20 times that the NEW transmitter is used, it transmits the "enable code" received from the operative transmitter to the Receiver. After recognising the "enable code", the Receiver automatically memorises the identity code of the transmitter that sent it. Possible error signals via the led:

4 flashes = transfer of "Enable Code" disabled.

6 flashes = transfer of "Enable Code" disabled between different transmitters.

10 flashes = errors in communication between the two devices.

15 flashes = memorisation failed as timeout has elapsed.

### **"Remote" memorisation [in proximity of receiver]:**

01. Move to a position, with the two transmitters, within the operating range of the receivers (within the maximum range).
02. Press (for at least 5 seconds) the required key on the NEW HSTX8 transmitter and then release.
03. Slowly press the key on the OLD transmitter 3 times. 04. Slowly press (once) the required key on the NEW HSTX8 transmitter and then release