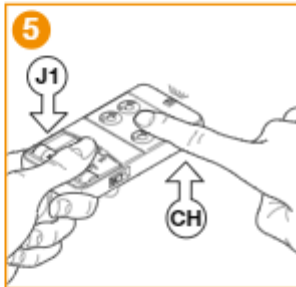
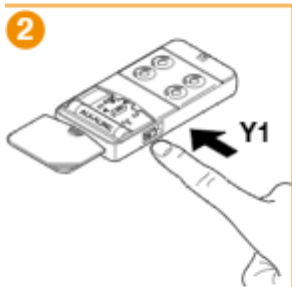
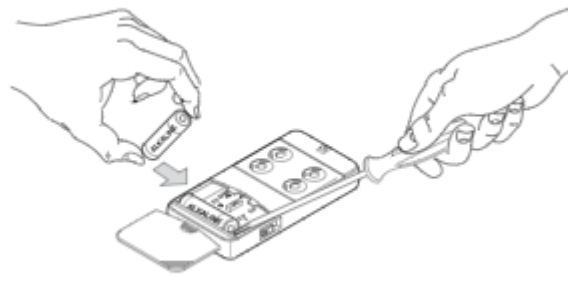
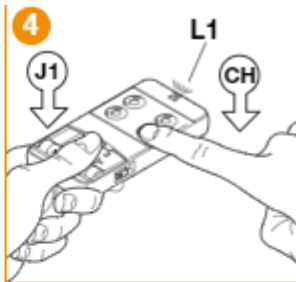
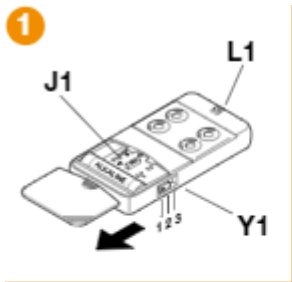
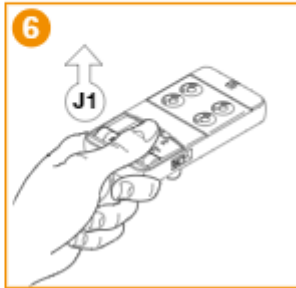
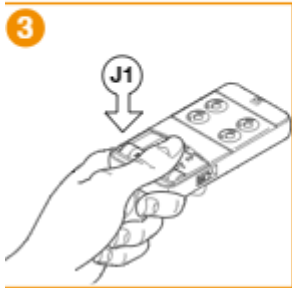




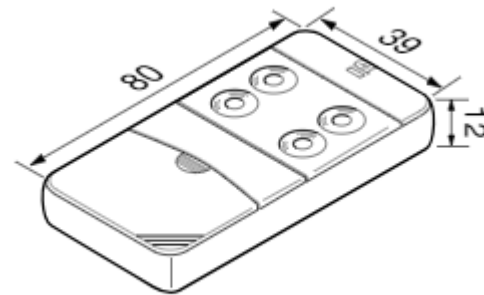
CARDIN S435



7



8



Generating the user code in the transmitters:

Open the access door (fig.1)

For the version equipped with a channel block selection switch choose the desired block of channels by moving the switch "Y1" (fig.2)

Press the button "J1"

While keeping button "J1" pressed down press the button "CH" corresponding to the required channel which is to be memorised (Led "L1" will start to flash) (fig.4).

Release the channel button "CH" and the led will carry on flashing (fig.5).

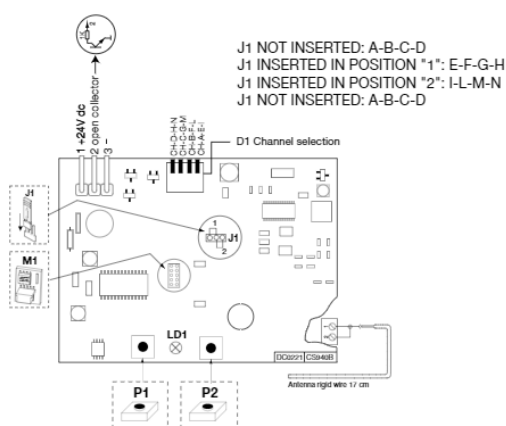
Release the button "J1", the led will turn off and the transmitter will memorise the last code which was transmitted (fig.6).

Repeat points 3-4-5-6 for any successive channels

To memorise another block of channels move the switch "Y1" to the required position and repeat the operations 3-4-5-6.

If a code is not generated it could be due to the fact that the memory is empty and it is therefore impossible to transfer the code to the receiver

Memorising the user code in the receiver:



Keep button "P1" pressed down and the led "LD1" will start to flash

Transmit the channel which is to be memorised, the led will flash rapidly and the channel will be memorised. Only one code can be inserted at a time. To insert successive codes repeat steps 1 and 2.

If the code is not memorised it could be due to the following:

The memory is full (32 codes already memorised) and the led remains lit. If this is the case you can only insert a new code after you have first cancelled an existing one or after wiping the entire memory