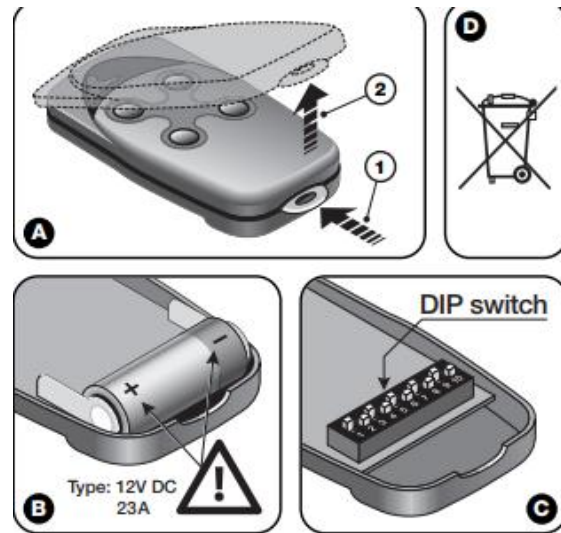




NICE FLO



First check that the transmitter is operating by pressing one of its buttons and check that the Led flashes at the same time (= transmission performed).

The "Flo" type transmitters are programmed by setting the same **On and Off** combination that is on the receiver with the Dipswitch (Fig. C)

How to program you NICE FLO remote control?

Open you remote control, you will find a row of ten white switches just above the battery

Open one of your existing remote controls (It must be in good working order)

In your new remote control, put the switches in exactly the same position (i.e. with a screwdriver)

When the switches are set the same as your original remote control, replace the cover

Your remote control is now programmed!